

Introduction

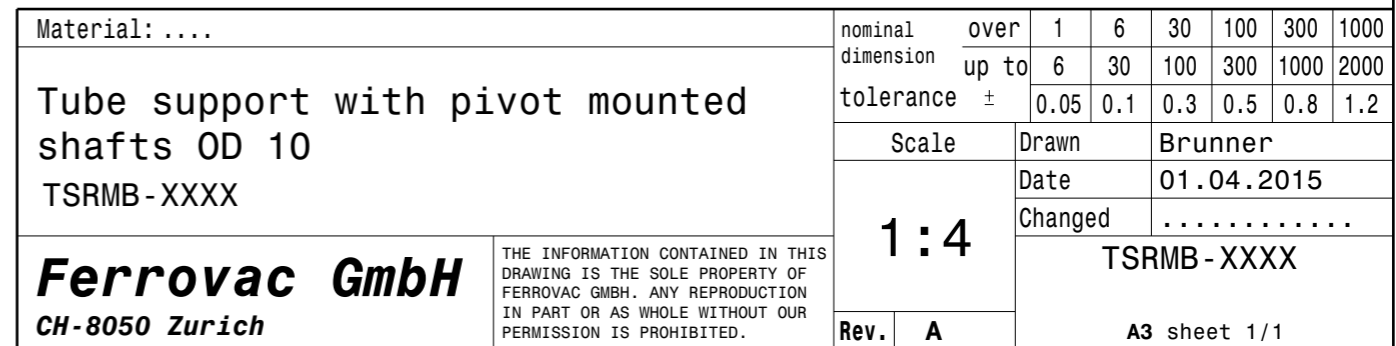
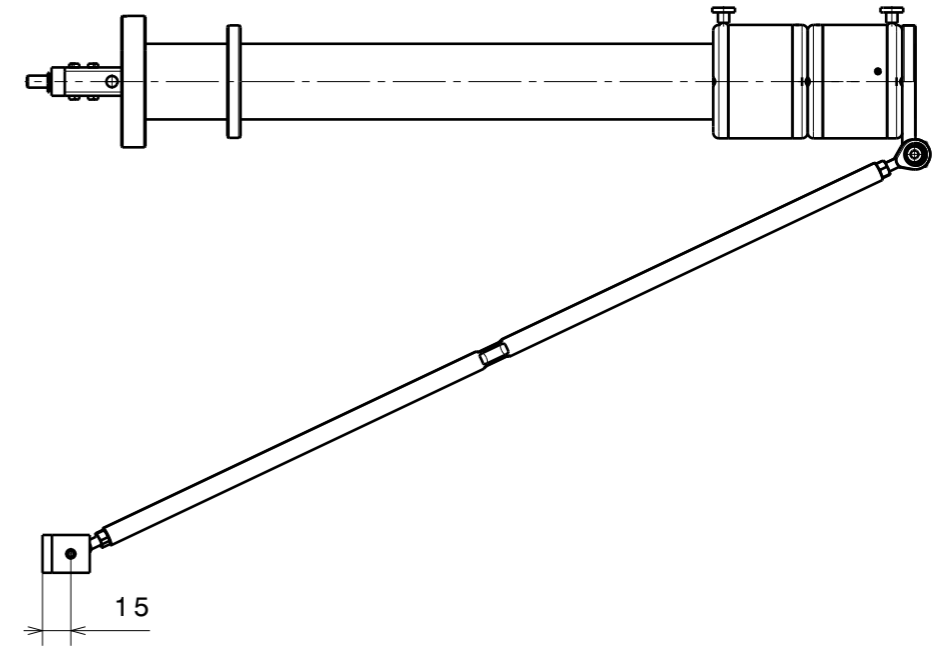
This tube support features two alignment shafts with 10mm (M-TSRMB-X) or 16mm (M-TSRMBS-X) OD. Left/right threaded pivot mounts allow for linear and angular adjustment. In combination with our port aligners these alignment shafts are very helpful for proper alignment of the sample transporter axis, while at the same time protecting it against accidental bending.

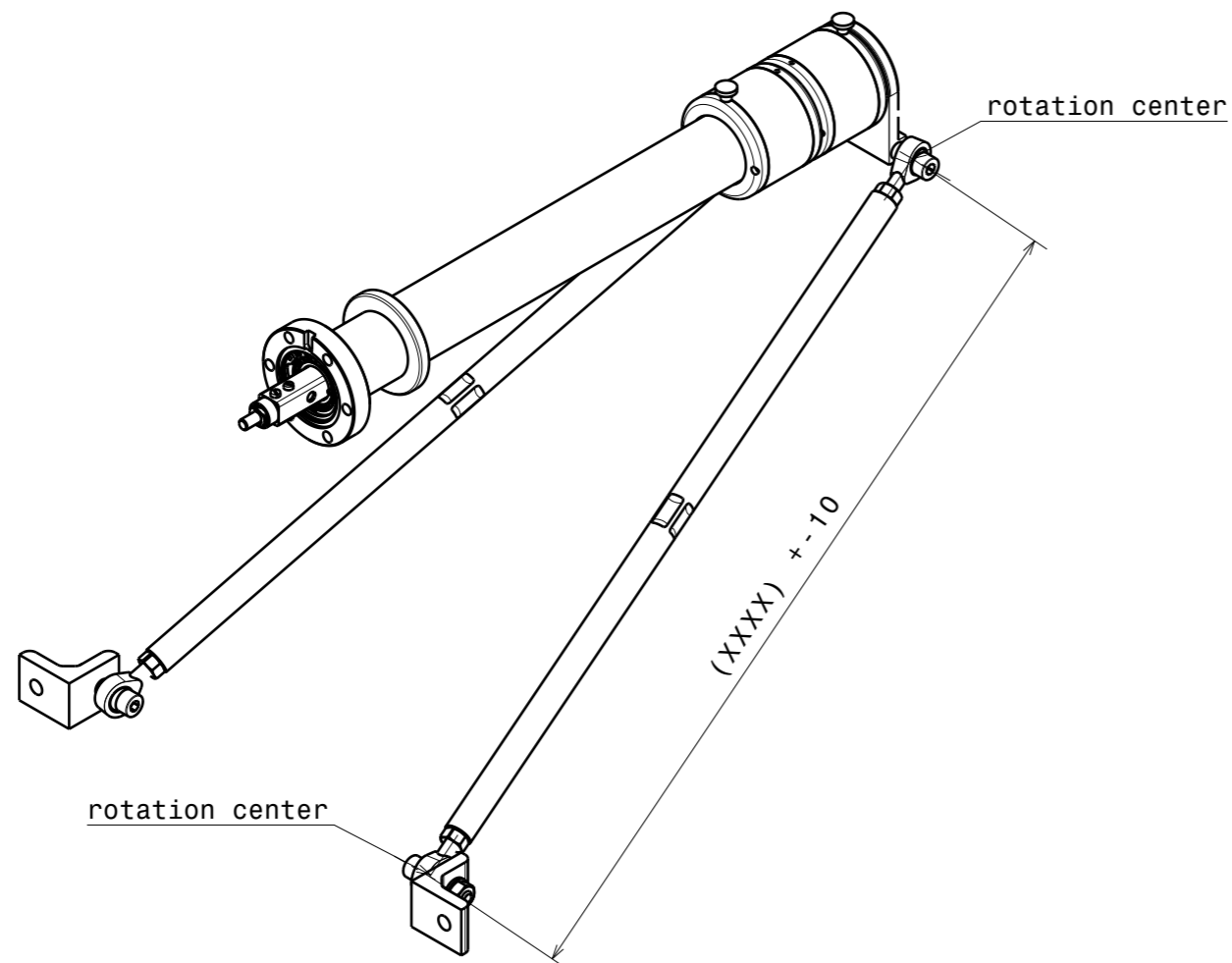
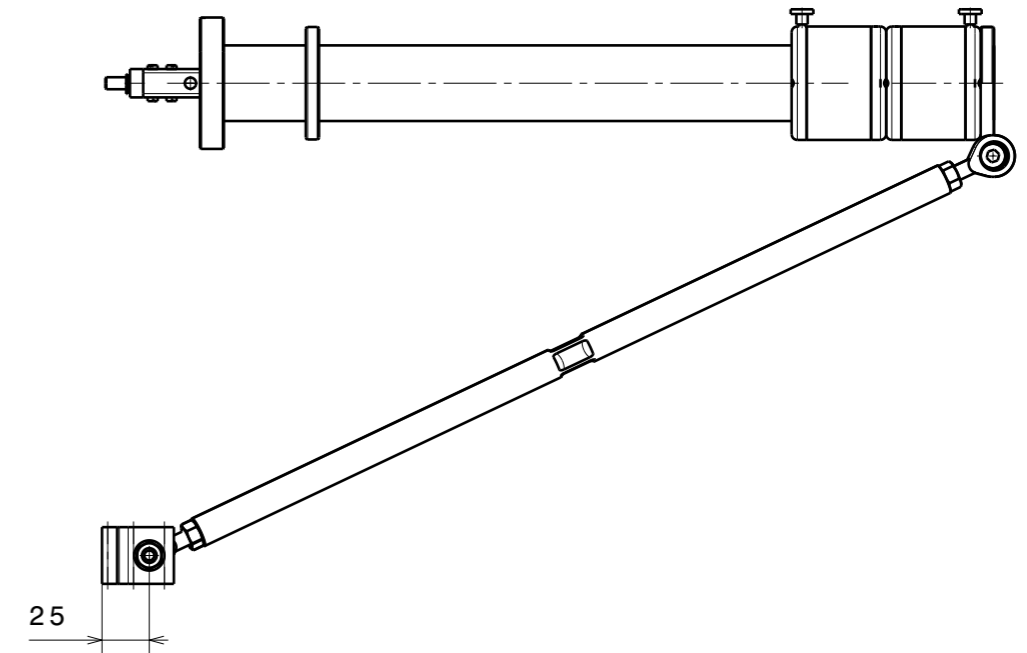
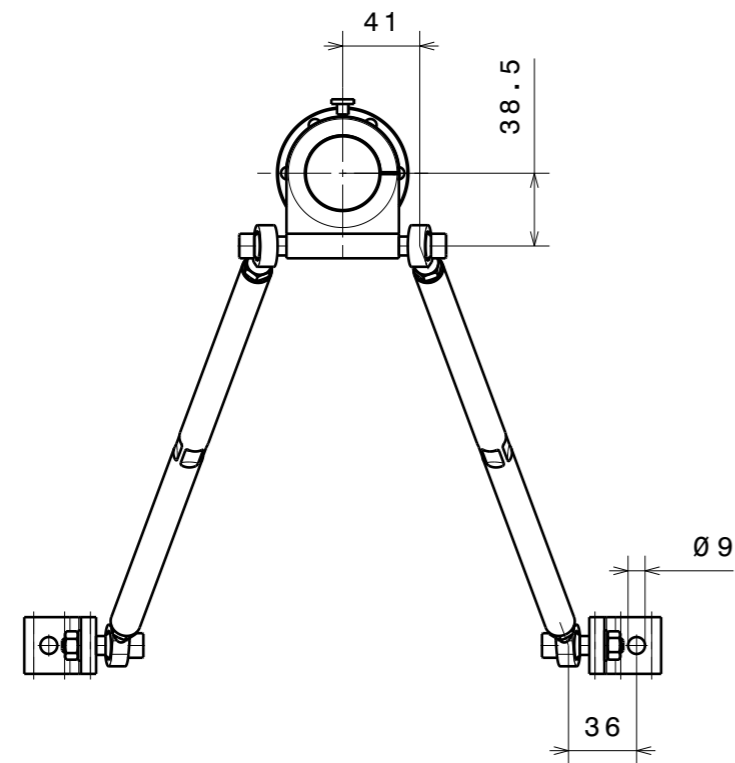
X: distance from pivot point to pivot point of the two ball joints on the same shaft

Ideally if $X < 500\text{mm}$ use a tube support M-TSRMB with pivot mounted shafts OD 10mm if $X > 500\text{mm}$ use M-TSRMBS-X



Description	Part Code
Tube support with pivot mounted shafts OD=10mm (up to 1000mm length - X)	M-TSRMB-X
Tube support with pivot mounted shafts OD=16mm (up to 1800mm length - X)	M-TSRMBS-X
Lock ring tube support bracket (for 40mm tubes)	M-LRRMTSBS





Material:		nominal dimension	over up to	1	6	30	100	300	1000
		tolerance	±	6	30	100	300	1000	2000
				0.05	0.1	0.3	0.5	0.8	1.2
		Scale		Drawn		Brunner			
		1 : 4		Date		01.04.2015			
				Changed				
				TSRMBS-XXXX					
Tube support with pivot mounted shafts OD 16 TSRMBS-XXXX									
Ferrovac GmbH CH-8050 Zurich		THE INFORMATION CONTAINED IN THIS DRAWING IS THE SOLE PROPERTY OF FERROVAC GMBH. ANY REPRODUCTION IN PART OR AS WHOLE WITHOUT OUR PERMISSION IS PROHIBITED.							
		Rev.	A	A3 sheet 1/1					

Tube support with pivot mounted shafts OD 16
TSRMBS-XXXX

Ferrovac GmbH
CH-8050 Zurich

THE INFORMATION CONTAINED IN THIS DRAWING IS THE SOLE PROPERTY OF FERROVAC GMBH. ANY REPRODUCTION IN PART OR AS WHOLE WITHOUT OUR PERMISSION IS PROHIBITED.

1:4	