

### Introduction

The **M-RSC2BS** revolving sample carrier transports and stores two M-SHBS block style sample holders. The sample holders are typically placed onto the platform using a single shaft WM40 wobblestick with an M-FRKBS fork. A spring loaded snap-in device keeps the platform at predefined angular positions of 45 deg. The platform is rotated using the wobblestick

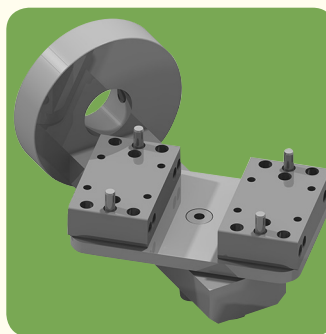
The **M-RSC2OM** revolving sample carrier transports and stores two M-SHOM sample plates. The sample holders are typically placed into the M-RECOM receptors using a dual shaft M-WMG40 wobblestick with a M-PGWMS(OM)pincer grip. A spring loaded snap-in device keeps the platform at predefined angular positions of 45 deg. The platform is rotated using the wobblestick.

The **M-RSC4BSK** revolving sample carrier transports and stores four M-SHBSK small block style sample holders. The sample holders are typically placed onto the platform using a single shaft WM40 wobblestick with an M-FRKBS fork. A spring loaded snap-in device keeps the platform at predefined angular positions of 45 deg. The platform is rotated using the wobblestick.

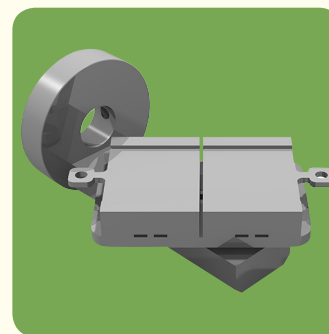
The **M-RSCFL4OM** flat revolving sample carrier transports and stores four M-SHOM sample plates. The sample holders are typically placed into the M-RECOM receptors using a dual shaft M-WMG40 wobblestick with a M-PGWMS(OM) pincer grip. A spring loaded snap-in device keeps the platform at predefined angular positions of 30° and 45°. The platform is rotated using the wobblestick.

The **M-RSCL3OM** revolving sample carrier transports and stores three M-SHOM sample plates. The sample holders are typically placed into the M-RECOM receptors using a dual shaft M-WMG40 wobblestick with a M-PGWMS(OM) pincer grip. A spring loaded snap-in device keeps the platform at predefined angular positions of 45 deg. The platform is rotated using the wobblestick.

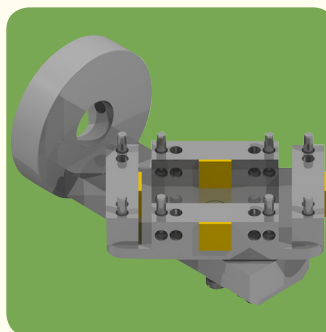
The **M-RSCL4BS** revolving sample carrier transports and stores four M-SHBS block style sample holders. The sample holders are typically placed onto the platform using a single shaft M-WMG40 wobblestick with an M-FRKBS fork. A spring loaded snap-in device keeps the platform at predefined angular positions of 45 deg. The platform is rotated using the wobblestick. A special pin arrangement in the center of the platform allows the change of the orientation of the sample holder block from horizontal to vertical and vice versa.



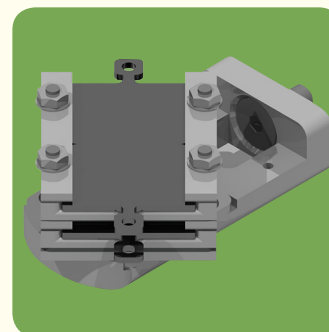
M-RSC2BS



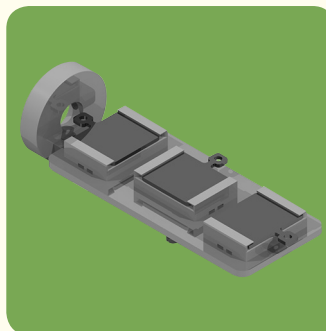
M-RSC2OM



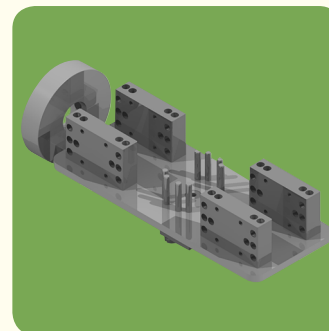
M-RSC4BSK



M-RSCFL4OM



M-RSCL3OM

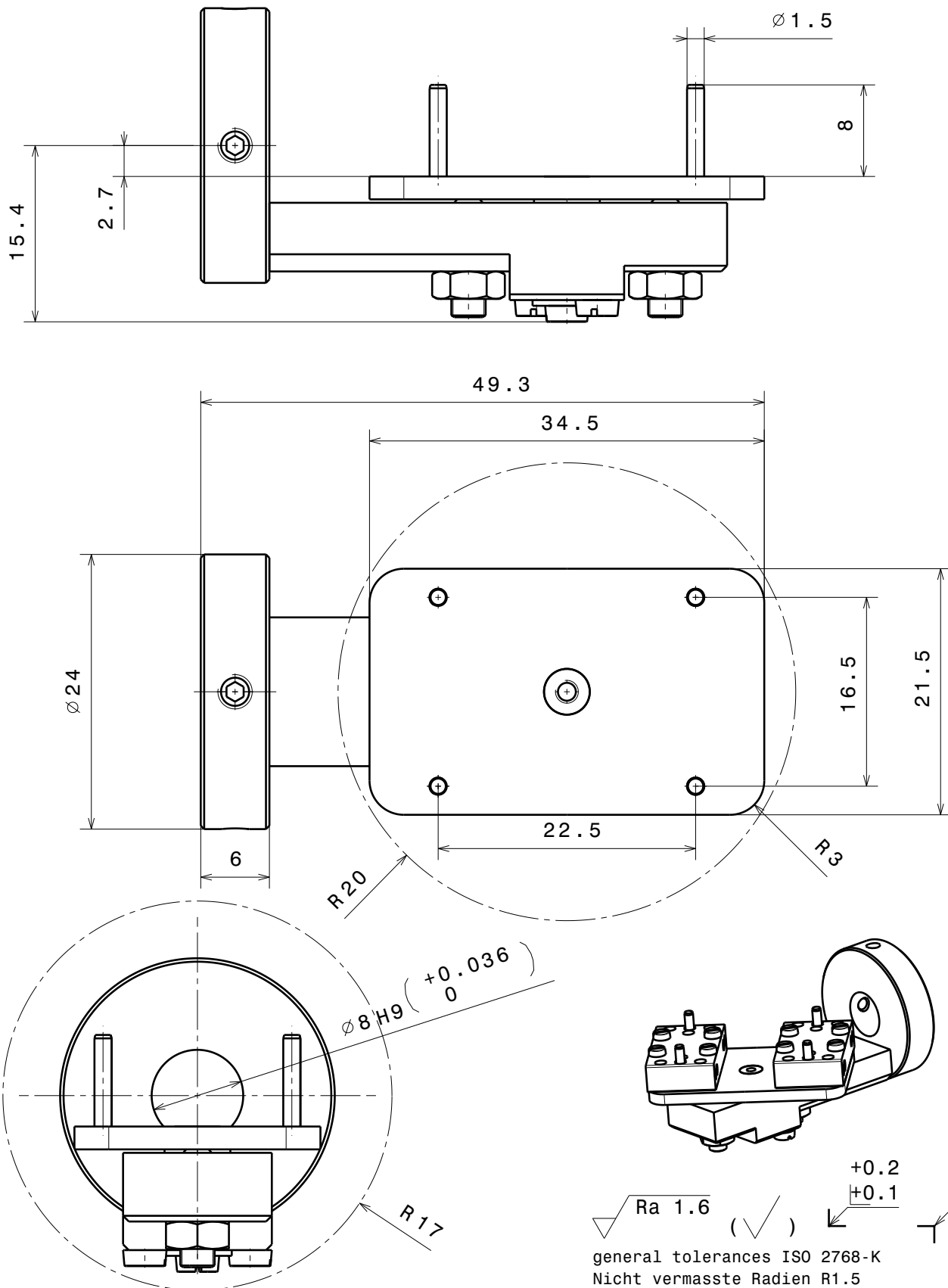


M-RSCL4BS

Description	Part Code
Revolving sample carrier for 2X block style holders	M-RSC2BS
Revolving sample carrier for 2X M-SHOM sample plates	M-RSC2OM
Revolving sample carrier for small block style holders	M-RSC4BSK
Flat Revolving sample carrier for M-SHOM sample plates	M-RSCFL4OM
Revolving sample carrier for 3X M-SHOM sample plates	M-RSCL3OM
Revolving sample carrier for 4X block style holders	M-RSCL4BS

### Specifications:

Fully UHV compatible



Material: all UHV compatible

Revolving Sample Carrier for  
two SHBS Block Style Holders

**Ferrovac GmbH**  
CH-8050 Zurich

THE INFORMATION CONTAINED IN THIS  
DRAWING IS THE SOLE PROPERTY OF  
FERROVAC GMBH. ANY REPRODUCTION  
IN PART OR AS WHOLE WITHOUT OUR  
PERMISSION IS PROHIBITED.

nominal dimension	over	1	6	30	100	300	1000
up to	6	30	100	300	1000	2000	
tolerance	±	0.05	0.1	0.3	0.5	0.8	1.2

Scale

Drawn

U. Maier

Date

16.2.2011

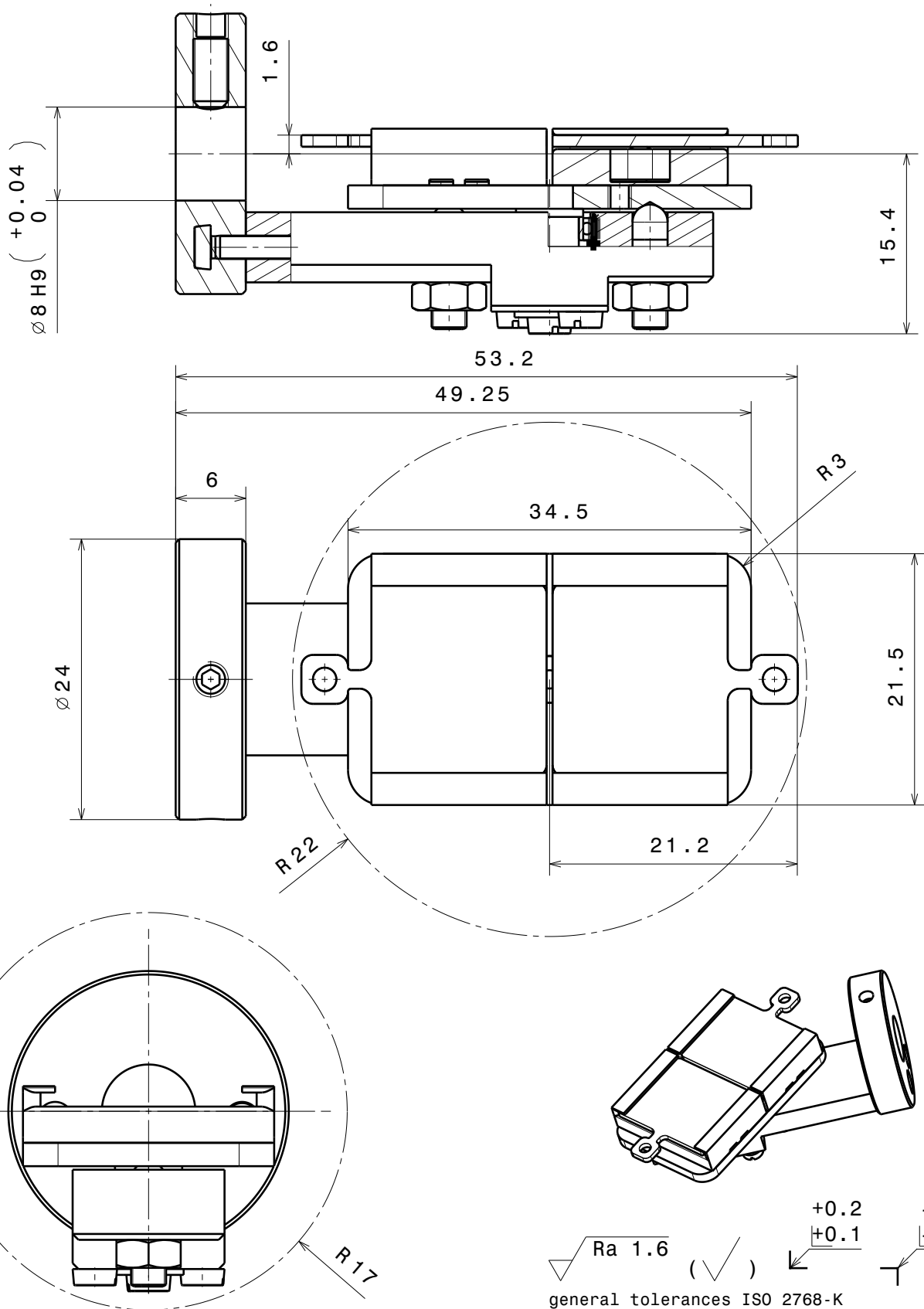
Checked

U. Maier

2:1

**RSC2BS**

sheet 1/1



$\nabla$  Ra 1.6 (✓)  $\swarrow$   $\begin{matrix} +0.2 \\ +0.1 \end{matrix}$   $\searrow$   $\begin{matrix} -0.1 \\ -0.2 \end{matrix}$

general tolerances ISO 2768-K  
Nicht vermasste Radien R1.5

Material: all UHV compatible

Revolving Sample Carrier for  
two SHOM sample plates

nominal dimension	over	1	6	30	100	300	1000
up to	6	30	100	300	1000	2000	
tolerance $\pm$	0.05	0.1	0.3	0.5	0.8	1.2	

Scale

Drawn

U. Maier

Date

16.2.2011

Checked

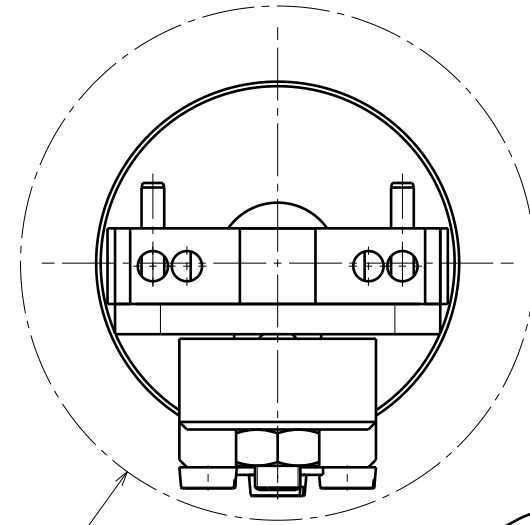
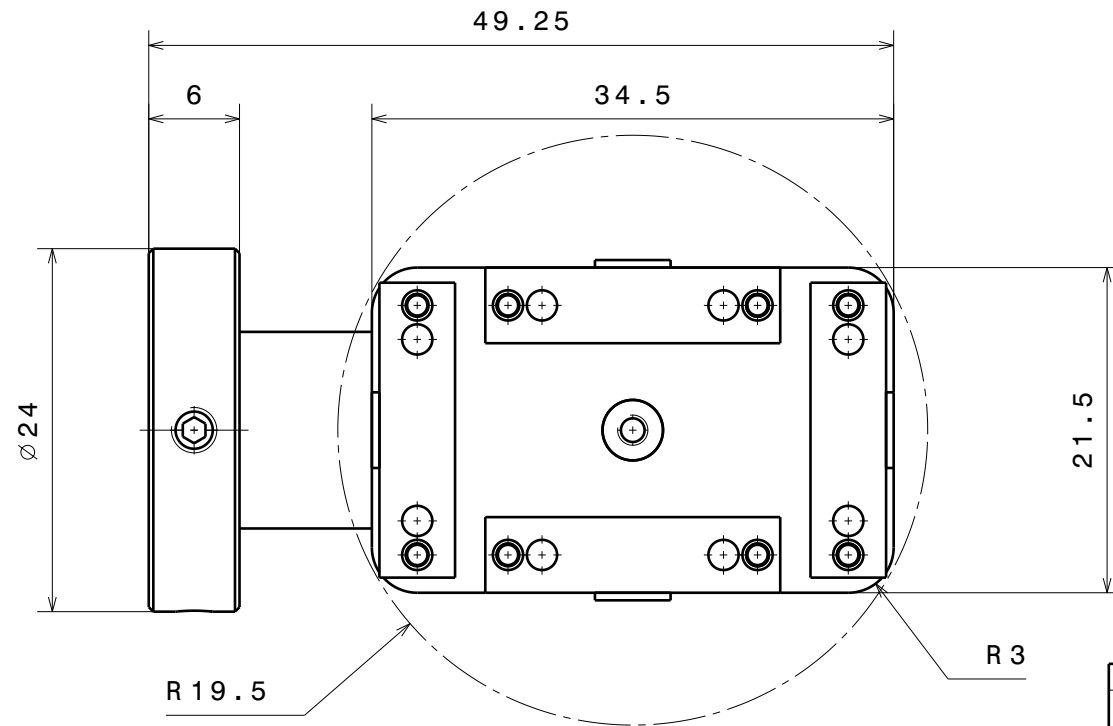
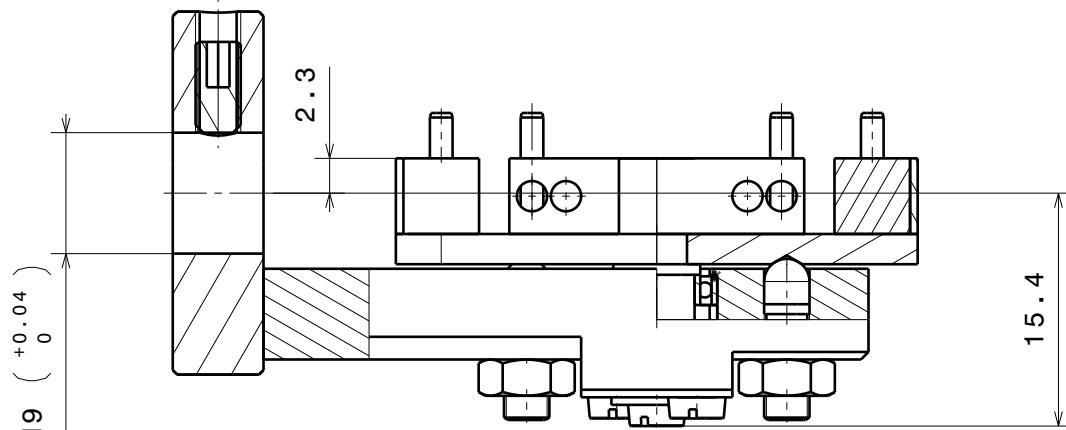
U. Maier

**Ferrovac GmbH**  
CH-8050 Zurich

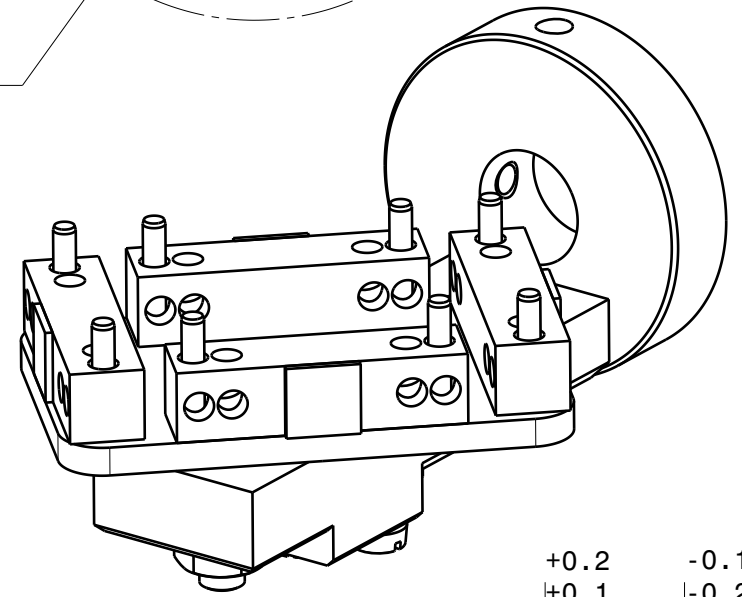
THE INFORMATION CONTAINED IN THIS  
DRAWING IS THE SOLE PROPERTY OF  
FERROVAC GMBH. ANY REPRODUCTION  
IN PART OR AS WHOLE WITHOUT OUR  
PERMISSION IS PROHIBITED.

2:1

**RSC20M**  
sheet 1/1

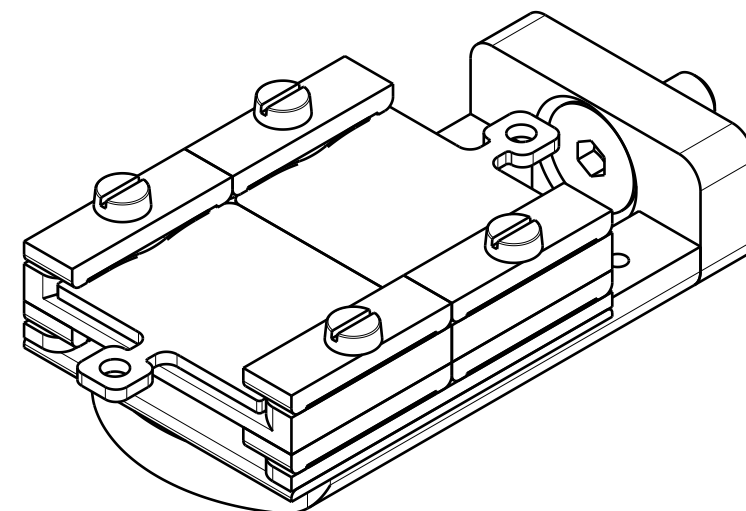
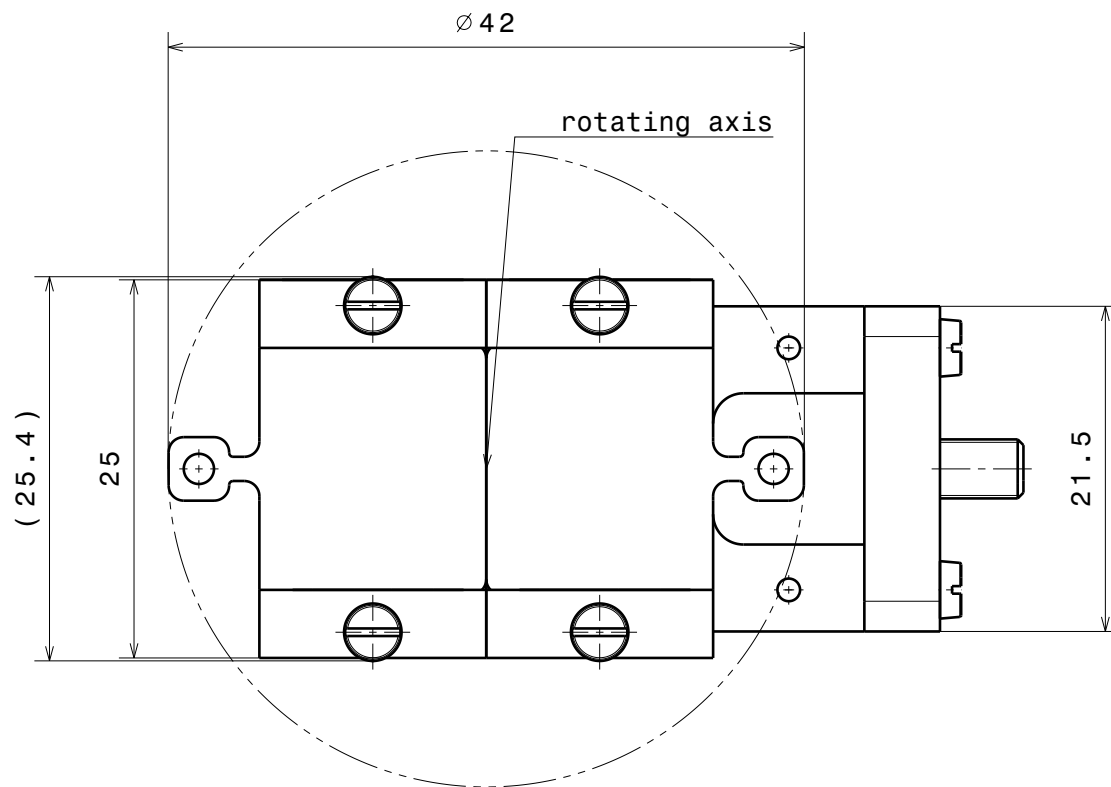
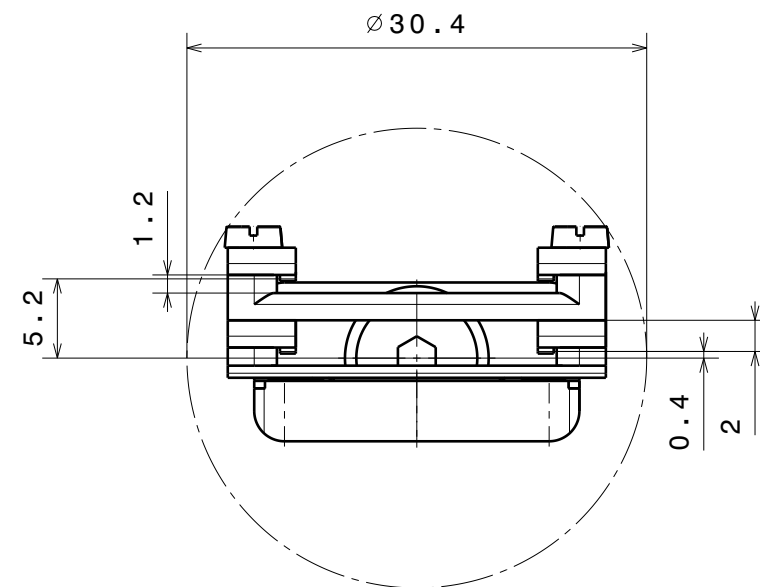
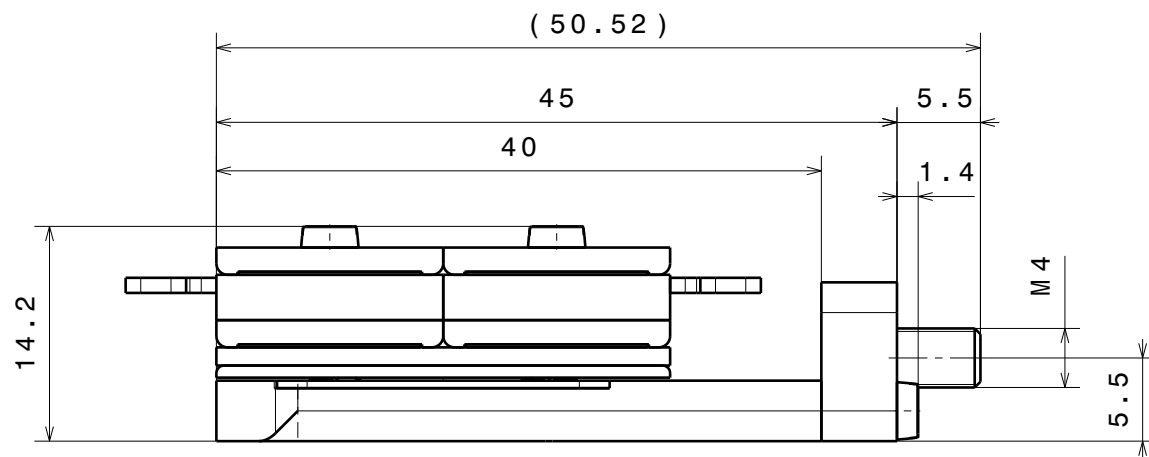


R 17



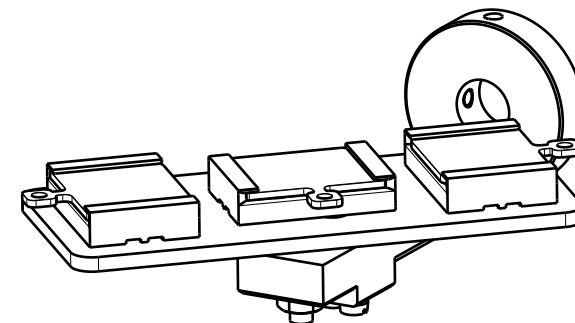
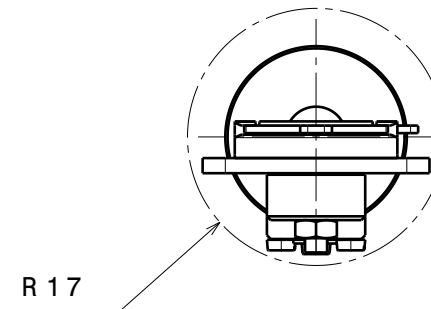
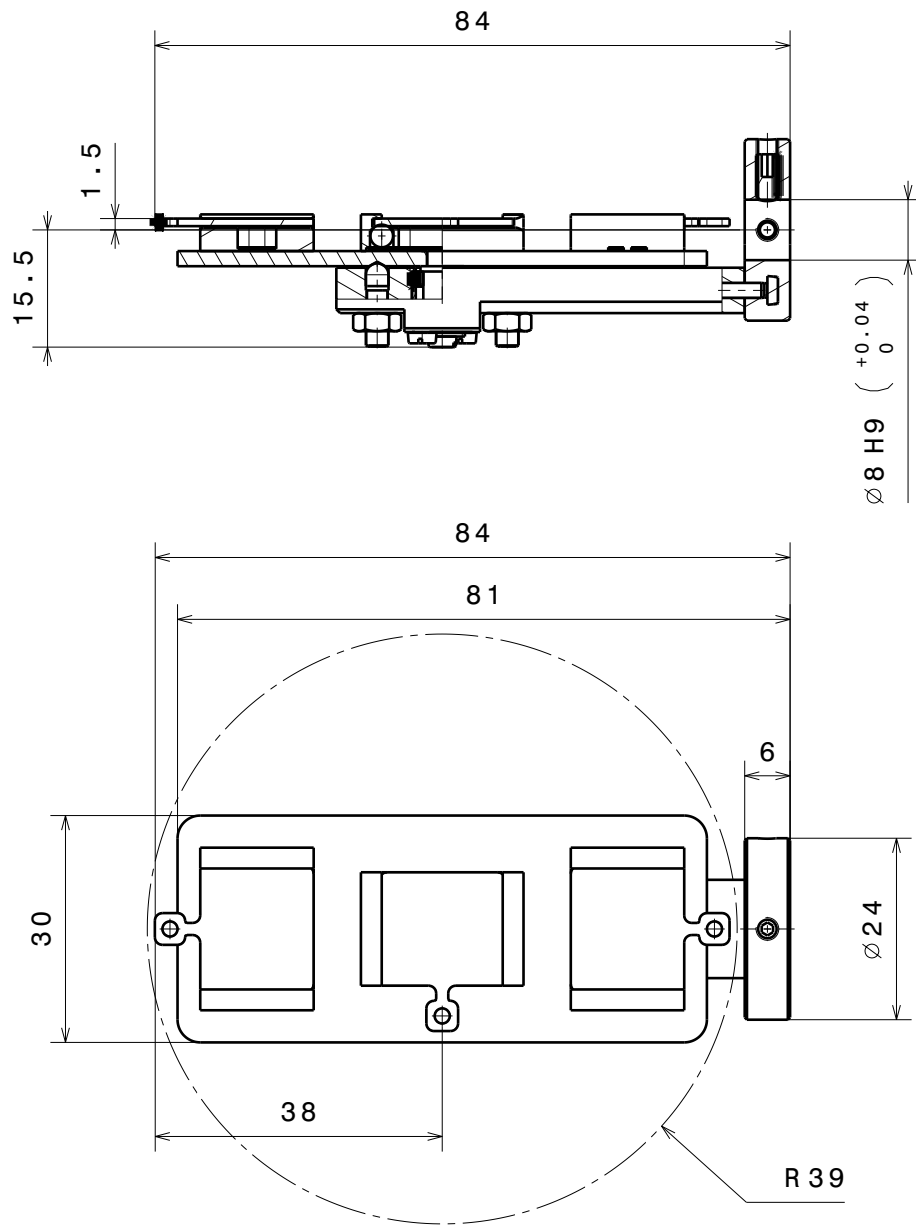
$\sqrt{Ra\ 1.6}$  (✓)  $\begin{matrix} +0.2 \\ +0.1 \end{matrix}$   $\begin{matrix} -0.1 \\ -0.2 \end{matrix}$   
 general tolerances ISO 2768-K

Material: all UHV compatible		nominal	over	1	6	30	100	300	1000
Revolving Sample Carrier RSC4BSK  RSC4BSK		dimension up to		6	30	100	300	1000	2000
		tolerance ±		0.05	0.1	0.3	0.5	0.8	1.2
		Scale	Drawn		D.Rechsteiner				
			Date	25.02.11					
			Checked	Name					
<b>Ferrovac GmbH</b>		2:1	<b>RSC4BSK</b> sheet 1/1						
CH-8050 Zurich									
THE INFORMATION CONTAINED IN THIS DRAWING IS THE SOLE PROPERTY OF FERROVAC GMBH. ANY REPRODUCTION IN PART OR AS WHOLE WITHOUT OUR PERMISSION IS PROHIBITED.									



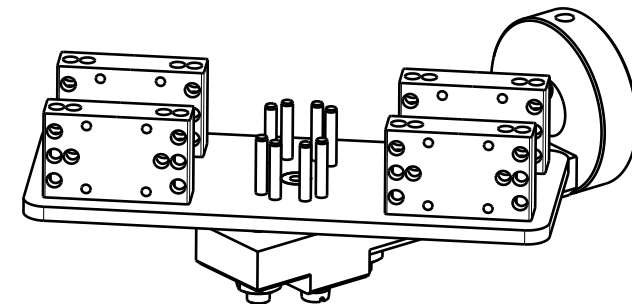
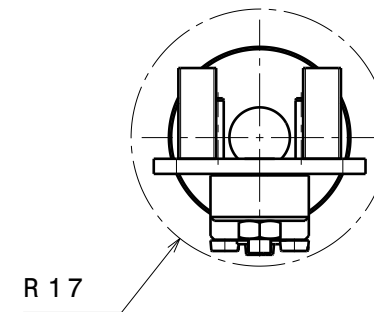
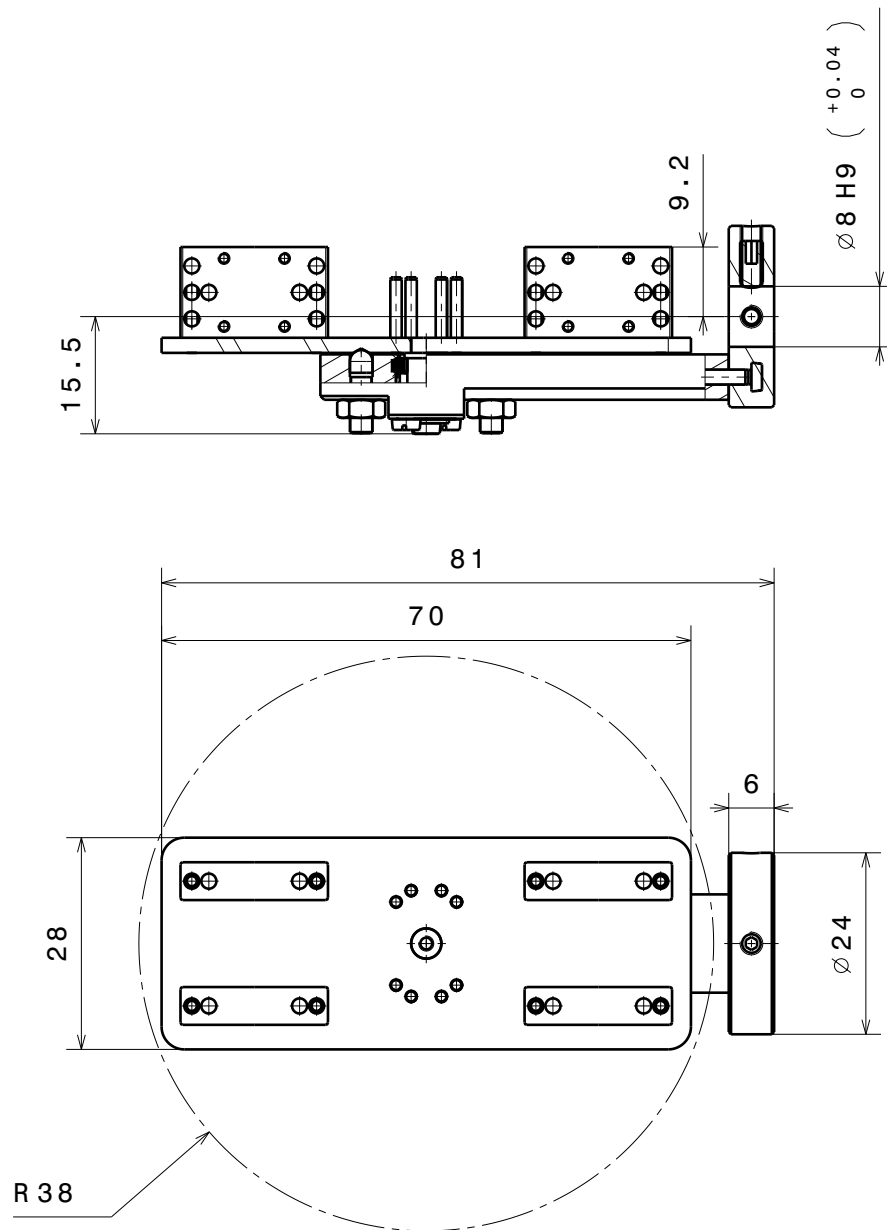
angular snap-in positions at 45 degrees

Material: fully UHV compatible		nominal	over	1	6	30	100	300	1000
		dimension up to	tolerance	±	6	30	100	300	1000
Revolving Sample Carrier for SHOM sample plates RSCFL40M		Scale	Drawn	D.Rechsteiner					
		2:1	Date	12.06.2014					
<b>Ferrovac GmbH</b> CH-8050 Zurich		Rev.	C	changed 28.06.2016					
				<b>RSCFL40M</b> sheet 1/1					



$\nabla$  Ra 1.6 (✓)  $\swarrow$   $\begin{matrix} +0.2 \\ +0.1 \end{matrix}$   $\searrow$   $\begin{matrix} -0.1 \\ -0.2 \end{matrix}$   
 general tolerances ISO 2768-K

Material: all UHV compatible		nominal over dimension up to tolerance ±	1	6	30	100	300	1000
Revolving Sample Carrier for SHOM sample plates			6	30	100	300	1000	2000
			0.05	0.1	0.3	0.5	0.8	1.2
			Scale		Drawn		D.Rechsteiner	
				Date		25.02.11		
			Checked		Name			
<b>Ferrovac GmbH</b>		THE INFORMATION CONTAINED IN THIS DRAWING IS THE SOLE PROPERTY OF FERROVAC GMBH. ANY REPRODUCTION IN PART OR AS WHOLE WITHOUT OUR PERMISSION IS PROHIBITED.	1:1	<b>RSCL30M</b> sheet 1/1				
CH-8050 Zurich								



$\sqrt{Ra\ 1.6}$  (✓)  $\begin{matrix} +0.2 \\ +0.1 \end{matrix}$   $\begin{matrix} -0.1 \\ -0.2 \end{matrix}$   
 general tolerances ISO 2768-K

Material: all UHV compatible		nominal	over	1	6	30	100	300	1000
		dimension up to		6	30	100	300	1000	2000
		tolerance $\pm$		0.05	0.1	0.3	0.5	0.8	1.2
Revolving Sample Carrier for Block Style Holders		Scale	Drawn	D.Rechsteiner					
			Date	25.02.11					
			Checked	Name					
<b>Ferrovac GmbH</b> CH-8050 Zurich		THE INFORMATION CONTAINED IN THIS DRAWING IS THE SOLE PROPERTY OF FERROVAC GMBH. ANY REPRODUCTION IN PART OR AS WHOLE WITHOUT OUR PERMISSION IS PROHIBITED.	1:1	<b>RSCL4BS</b> sheet 1/1					