

### Introduction

A simple way of building a heating stage is to combine the M-RECOM with a HTR1001 Boralectric™ resistive heating element. The receptacle for M-SHOM sample plates can be mounted directly on top of the heater: The M-RECOM adapter is therefore made of Molybdenum.

The Boralectric™ heater is not included and must be ordered separately, either from ourselves, or directly from the manufacturer.

Description	Part Code
Receptacle for M-SHOM plates. Housing & springs molybdenum, ruby spheres. Fits directly onto HTR1001	M-RECOMHTR1001S

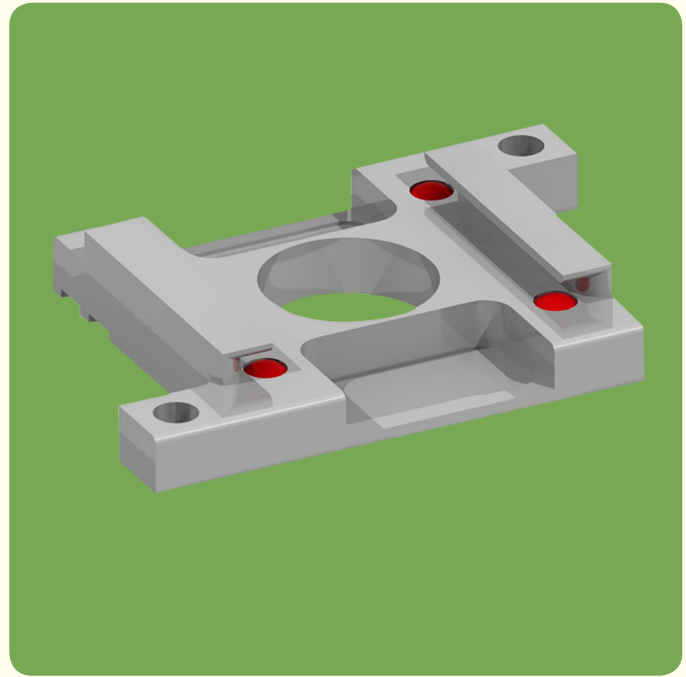
### Specifications:

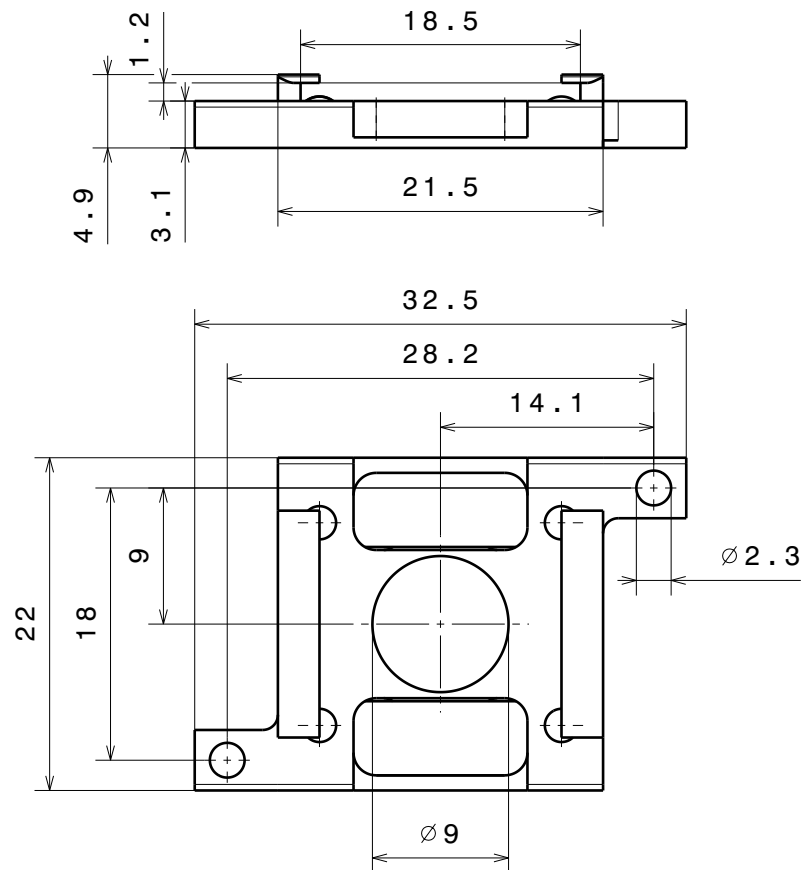
Fully UHV compatible

Housing and leaf springs made of molybdenum

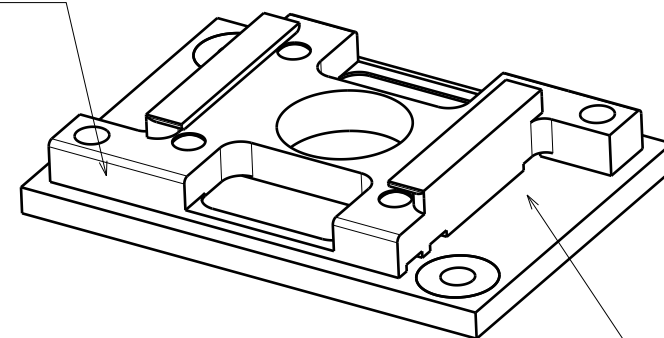
Spheres: Ruby

heating element and screws must be purchased separately.

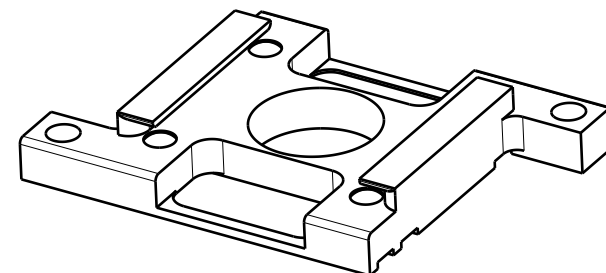




RECOMHTR1001S



Boralelectric resistive heating element not included



Ra 0.8 (✓)  $\begin{matrix} +0.2 \\ +0.1 \end{matrix}$   $\begin{matrix} -0.1 \\ -0.2 \end{matrix}$   
 general tolerances ISO 2768-K

Material: fully UHV compatible		nominal	over	1	6	30	100	300	1000
		dimension up to		6	30	100	300	1000	2000
		tolerance $\pm$		0.05	0.1	0.3	0.5	0.8	1.2
Receptacle for SHOM sample plates RECOMHTR1001S		Scale	Drawn	D.Rechsteiner					
			Date	07.03.2014					
			changed	.....					
<b>Ferrovac GmbH</b> CH-8050 Zurich		THE INFORMATION CONTAINED IN THIS DRAWING IS THE SOLE PROPERTY OF FERROVAC GMBH. ANY REPRODUCTION IN PART OR AS WHOLE WITHOUT OUR PERMISSION IS PROHIBITED.		1:2		RECOMHTR1001S			
Rev.		A				sheet 1/1			