

Introduction

Common flag style sample holders do not have electrical contacts nor do they reproducibly snap into position. With this design, we are adding the possibility of wiring up devices on flag style holders. 13 electrical contacts are provided. A reproducible positioning in the micrometer range is achieved by means of three slits in the sample plate. The sample snaps into position on three ruby spheres. Two additional rubies press from the top, preloaded by leaf springs.

We strongly recommend to purchase this product factory wired. A wiring kit M-IVWEC13UNT includes 13 miniature 50 Ohm coaxial cables.

Please contact us for a detailed discussion of your requirements.

Description	Part Code
Stainless steel receptacle for M-SHOMECE13 with 13 electrical contacts	M-RECOMEC13(ST)
CuBe receptacle for M-SHOMECE13 with 13 electrical contacts	M-RECOMEC13(CB)

Specifications:

Number of contacts: 13

Features three ruby spheres for sample snap-in

Contacts Gold plated CuBe2

Isolators: PEEK

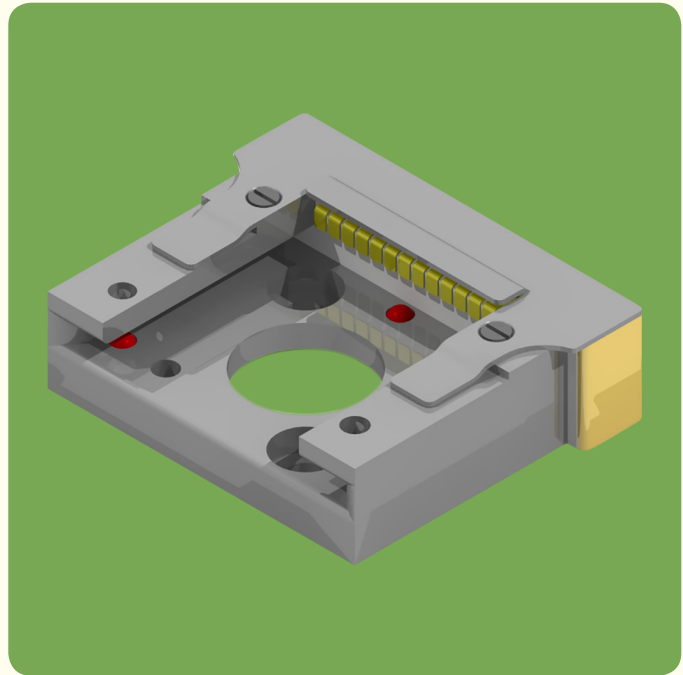
Housing: stainless steel 1.4301

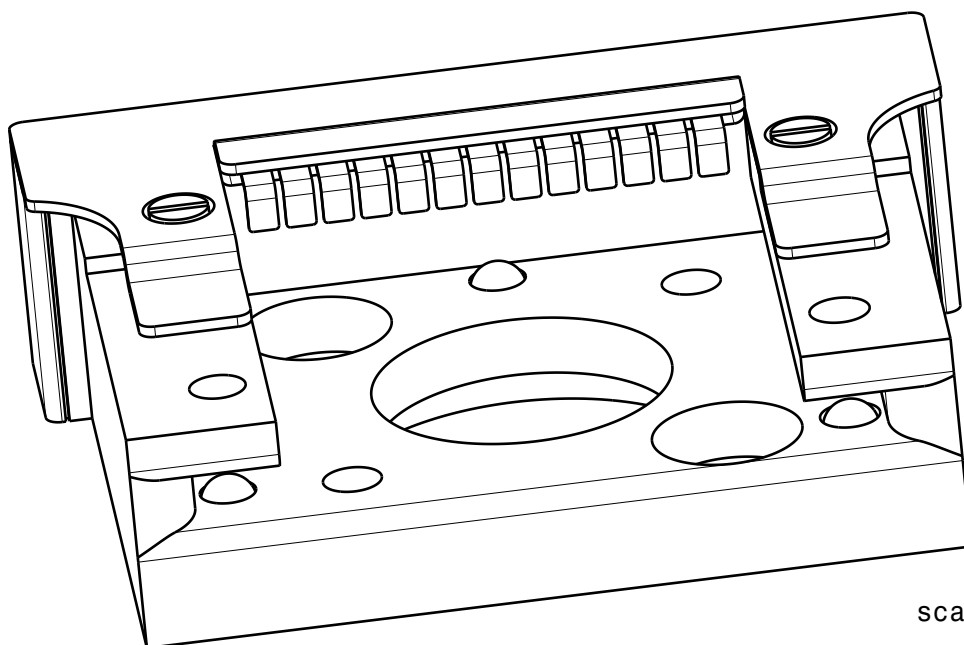
Springs: stainless steel 1.4571

Screws: stainless steel grade A2 or higher

Max. temperature: 200°C

Accepts M-SHOMECE13 flag style sample plate assembly

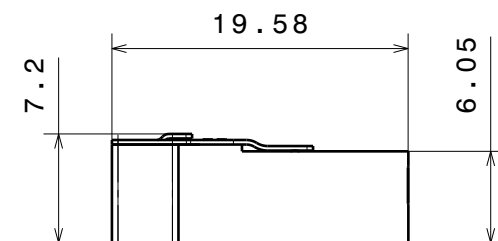
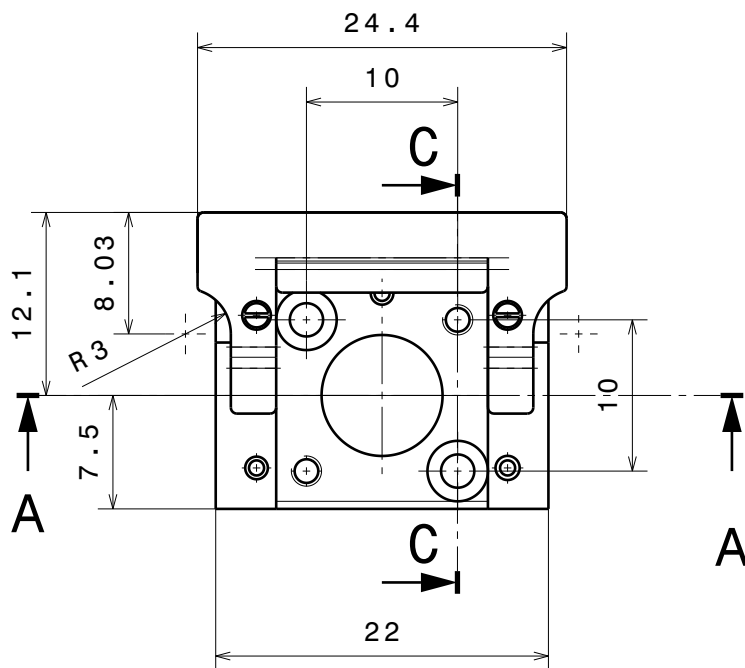
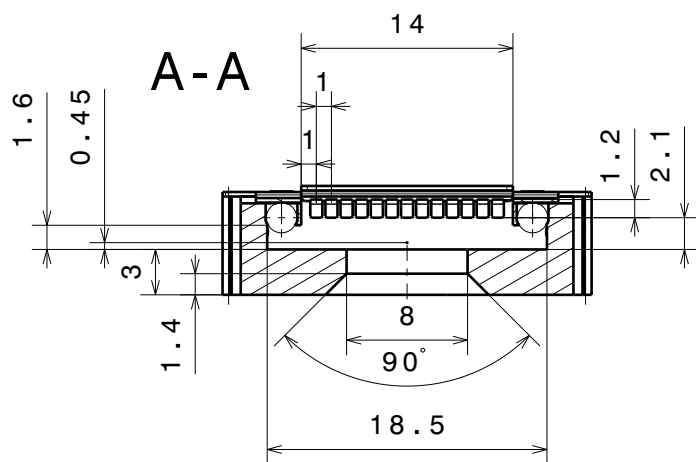




scale 5:1

∇ Ra 0.8 (✓) \swarrow $\begin{matrix} +0.2 \\ +0.1 \end{matrix}$ \searrow $\begin{matrix} -0.1 \\ -0.2 \end{matrix}$
 general tolerances ISO 2768-K

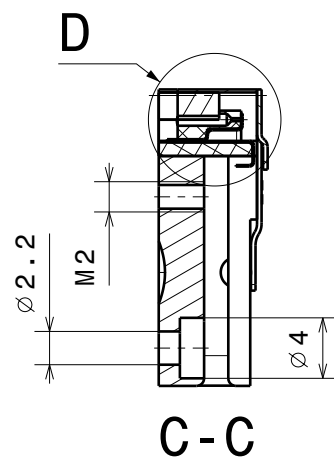
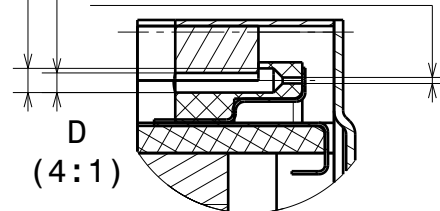
Material: all materials uhv compatible		nominal dimension	over up to	1	6	30	100	300	1000
Receiver for SHOME C13 Slim Version		tolerance	±	6	30	100	300	1000	2000
				0.05	0.1	0.3	0.5	0.8	1.2
with 13 electrical contacts		Scale		Drawn		C.Weiss			
		5 : 1		Date		21.06.2017			
				Changed		10.10.2018 CW			
Ferrovac GmbH CH-8050 Zurich		THE INFORMATION CONTAINED IN THIS DRAWING IS THE SOLE PROPERTY OF FERROVAC GMBH. ANY REPRODUCTION IN PART OR AS WHOLE WITHOUT OUR PERMISSION IS PROHIBITED.		RECOME C13 sheet 1/2					
		Rev.	C						



max. outer cable $\varnothing 0.8$

min. outer cable $\varnothing 0.65$

cross section max. $\varnothing 0.2$



∇ Ra 0.8 (✓) $\begin{matrix} +0.2 \\ +0.1 \end{matrix}$ $\begin{matrix} -0.1 \\ -0.2 \end{matrix}$
general tolerances ISO 2768-K

Material: all materials uhv compatible

Receiver for SHOME C13

with 13 electrical contacts

Ferrovac GmbH
CH-8050 Zurich

THE INFORMATION CONTAINED IN THIS
DRAWING IS THE SOLE PROPERTY OF
FERROVAC GMBH. ANY REPRODUCTION
IN PART OR AS WHOLE WITHOUT OUR
PERMISSION IS PROHIBITED.

nominal dimension	over	1	6	30	100	300	1000
up to	6	30	100	300	1000	2000	
tolerance \pm	0.05	0.1	0.3	0.5	0.8	1.2	

Scale

Drawn

C. Weiss

Date

21.06.2017

Changed

10.10.2018 CW

2:1

Rev.

C

RECOME C13

sheet 2/2