

Introduction

Ideally, wobblesticks are mounted on DN40CF flanges with oversized tubes. If no such flange is used, the deflection of M-WM40 and M-WMG40 wobblesticks is limited as the bellows can collide and also get damaged! For an inner diameter of 35 mm, deflection is even inhibited. To restore some deflection and to ensure there is no risk of damaging the bellows, we recommend the use of a BP40.

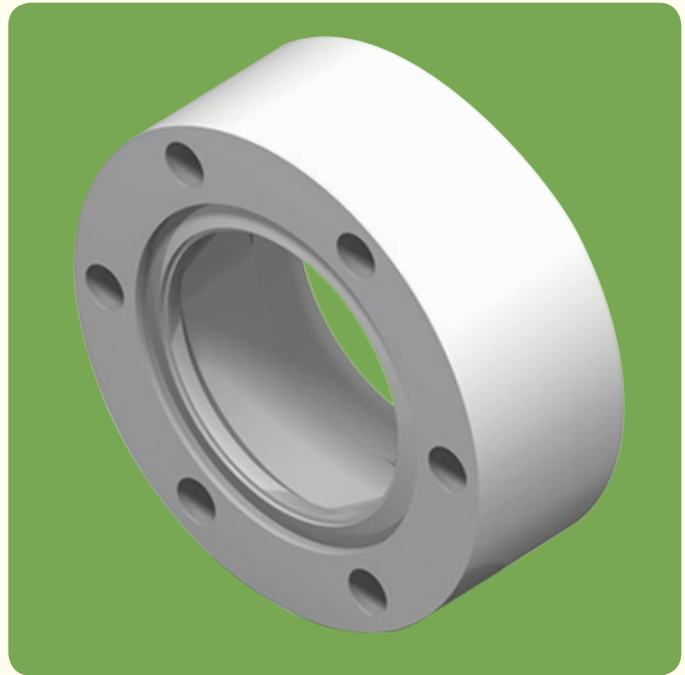
To align the wobblestick, we suggest using an M-WM-TS

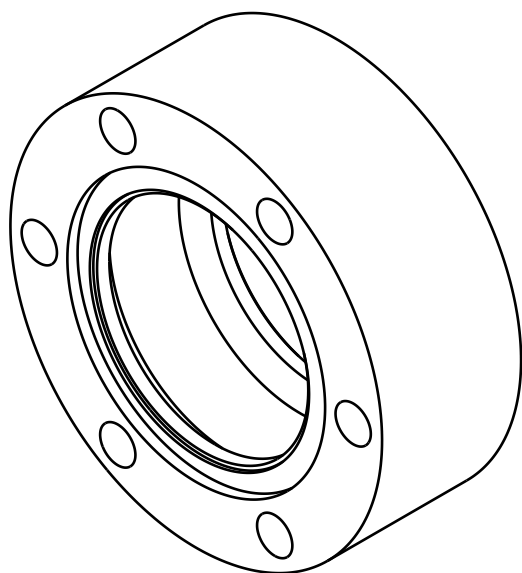
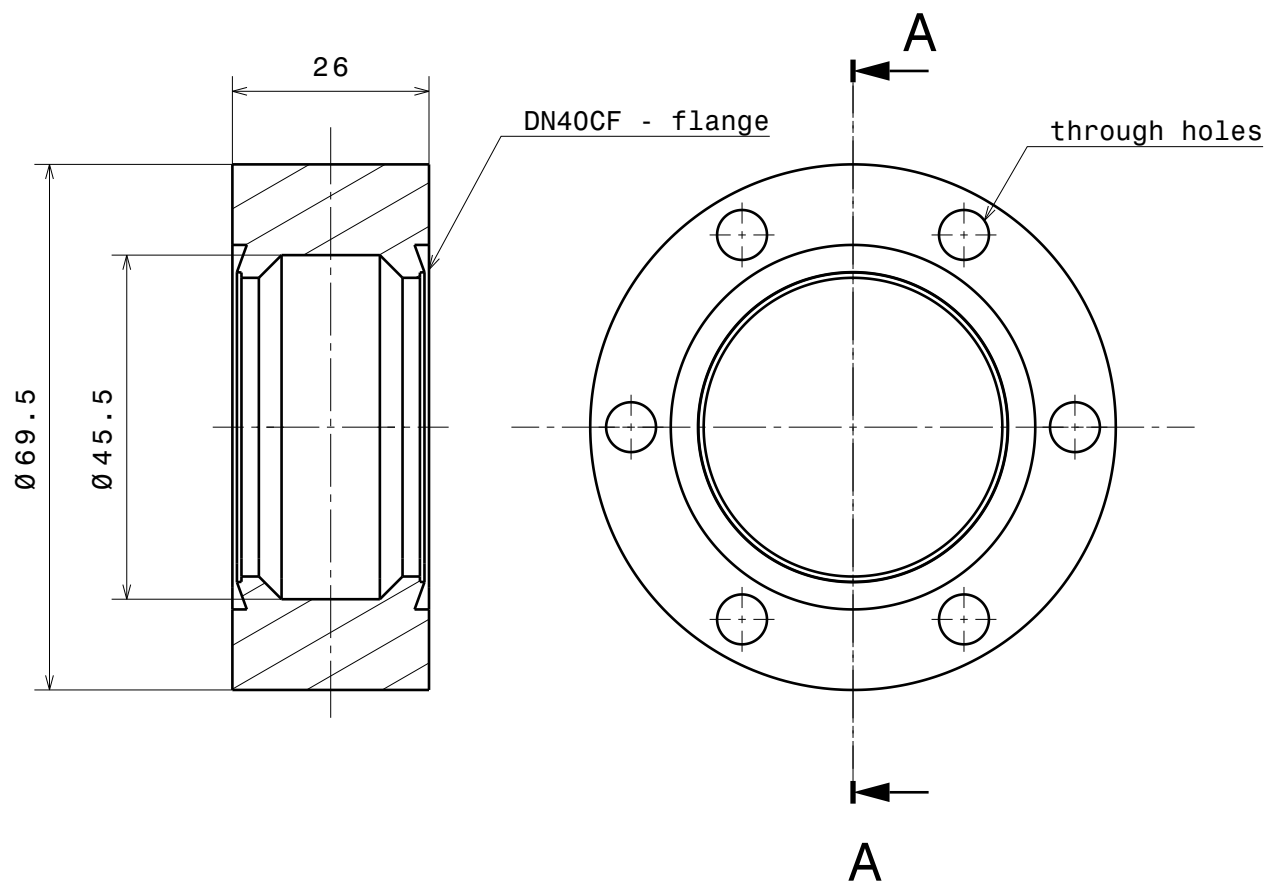
Description	Part Code
Bellow protection for wobble sticks*	M-BP40

Specifications:

Materials

Stainless steel 1.4301





Material: fully UHV compatible material

Bellows Protection for
Wobblesticks

BP

Ferrovac GmbH
CH-8050 Zurich

THE INFORMATION CONTAINED IN THIS
DRAWING IS THE SOLE PROPERTY OF
FERROVAC GMBH. ANY REPRODUCTION
IN PART OR AS WHOLE WITHOUT OUR
PERMISSION IS PROHIBITED.

nominal dimension	over	1	6	30	100	300	1000
up to	6	30	100	300	1000	2000	
tolerance	±	0.05	0.1	0.3	0.5	0.8	1.2

Scale

Drawn

Brunner

Date

31.03.2015

Changed

.....

1:1

Rev. A

BP40

sheet 1/2

