

### Introduction

The M-PGWMS(OM) is made with the appropriate groove to fetch M-SHOM style sample plates. In its standard version, angular degree of freedom of the sample plate held by the pincer allows for dangling of the sample. Exact values for the clearance of the sample plate are given in the drawing. For a firmer grip of the plate, please specify the (OMH) option. In combination with MDG dual shaft linear-/rotary feedthroughs, the (OMH) option is recommended.

Adds 27.0mm to dimension Y of the main product

Description	Part Code
Straight pincer grip for M-SHOM flag style sample plates	M-PGWMS(OM)
Hard grip straight pincer grip for M-SHOM flag style sample plates	M-PGWMS(OMH)

### Specifications:

#### Materials

Stainless steel 1.4301

Berylco 25

#### Vacuum Range

atm to  $1 \times 10^{-11}$  mbar

#### Bakeout Temperature \*

150°C max.

#### Jaw Opening

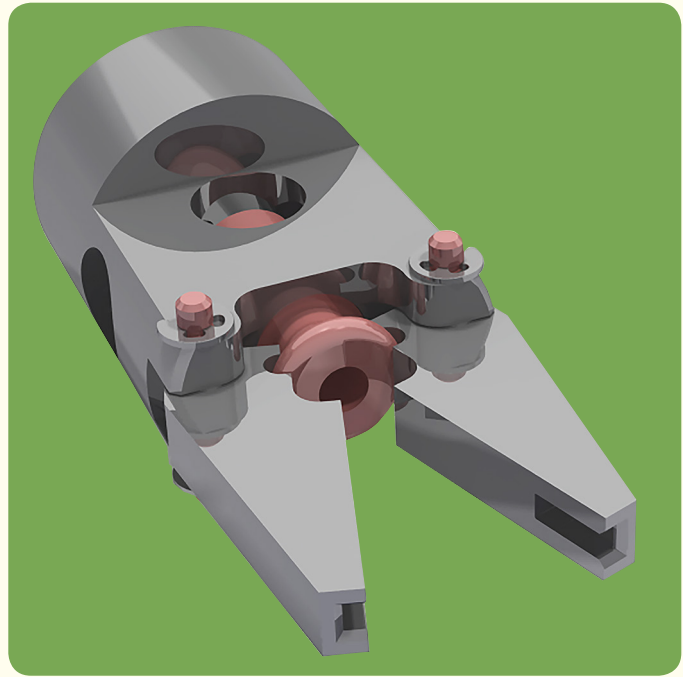
35°

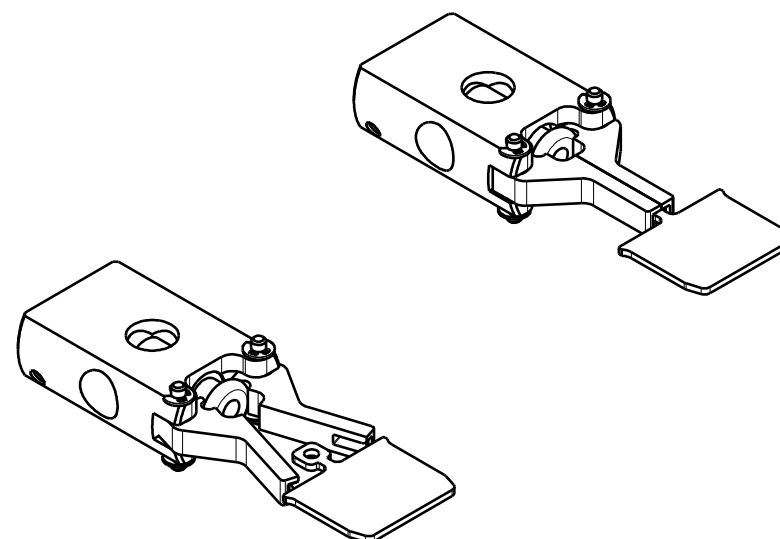
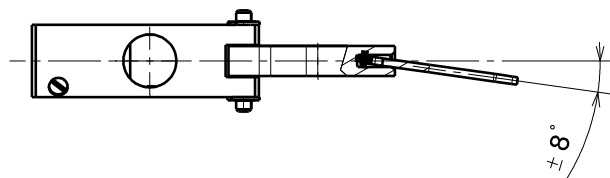
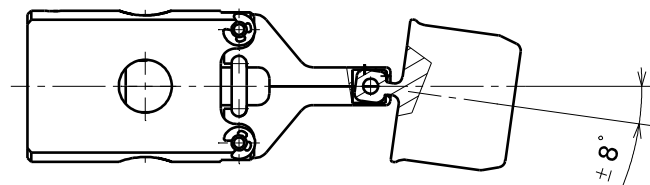
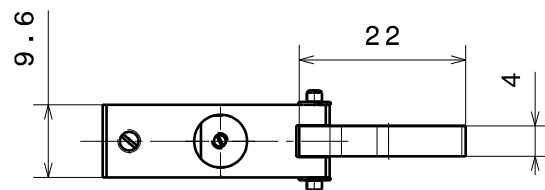
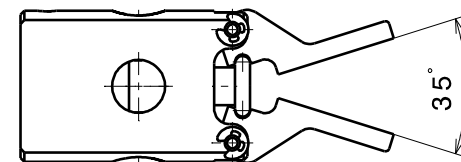
#### Standard clearance, play of

+/- 8°

#### Hard version clearance, play of

+/- 2°



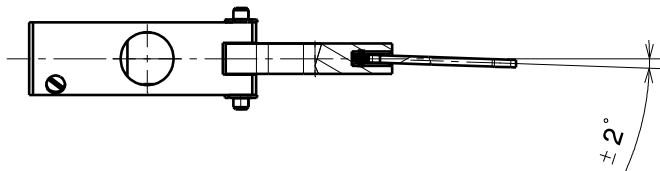
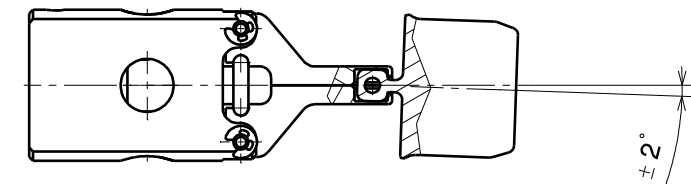
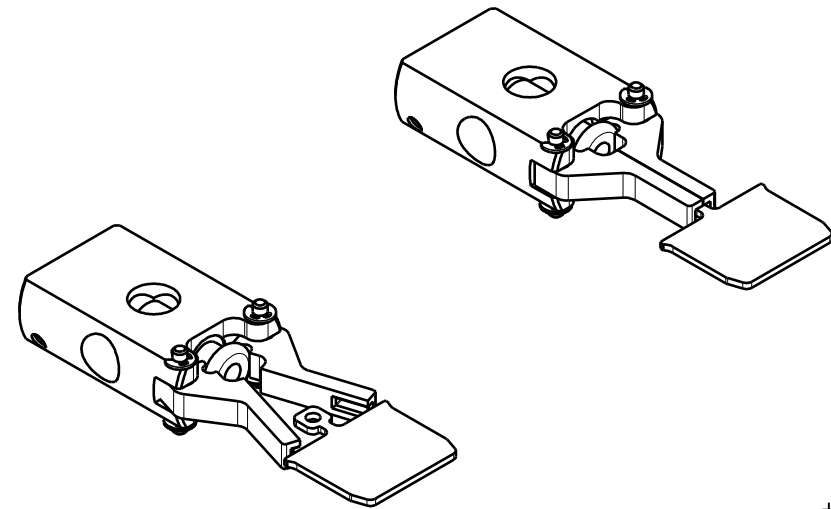
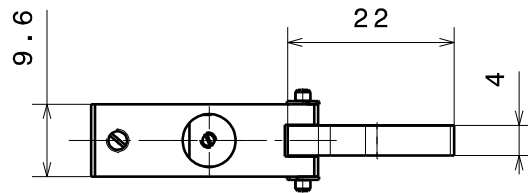
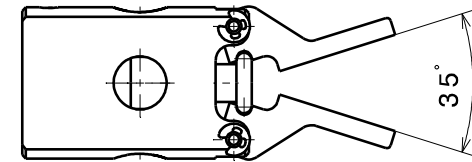
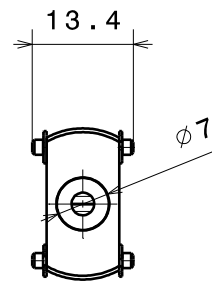
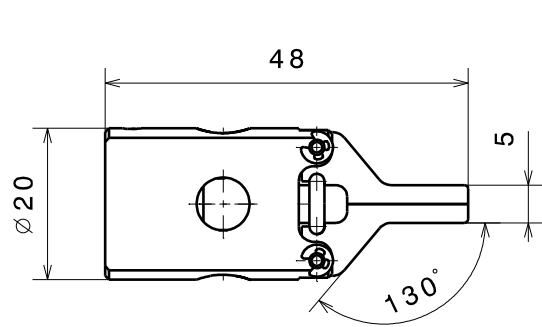







general tolerances ISO 2768-K

Material: all UHV compatible		nominal over dimension up to tolerance ±	1	6	30	100	300	1000	
Straight pincer grip for SHOM			6	30	100	300	1000	2000	
			tolerance ±						
			0.05	0.1	0.3	0.5	0.8	1.2	
PG		Scale	Drawn		JB				
		1 : 1	Date		20.05.2016				
			changed		.....				
Ferrovac GmbH CH-8050 Zurich		THE INFORMATION CONTAINED IN THIS DRAWING IS THE SOLE PROPERTY OF FERROVAC GMBH. ANY REPRODUCTION IN PART OR AS WHOLE WITHOUT OUR PERMISSION IS PROHIBITED.		PGWMS (OM) sheet 2/2					
		Rev.	B						



general tolerances ISO 2768-K

Material: all UHV compatible		nominal		over	1	6	30	100	300	1000
Straight pincer grip (hard grip) for SHOM sample plates		dimension up to			6	30	100	300	1000	2000
		tolerance ±			0.05	0.1	0.3	0.5	0.8	1.2
PG		Scale		Drawn			JB			
1:1				Date			25.05.2016			
				changed			.....			
<b>Ferrovac GmbH</b> <b>CH-8050 Zurich</b>		THE INFORMATION CONTAINED IN THIS DRAWING IS THE SOLE PROPERTY OF FERROVAC GMBH. ANY REPRODUCTION IN PART OR AS WHOLE WITHOUT OUR PERMISSION IS PROHIBITED.								
		Rev.	B		<b>PGWMS (OMH)</b> sheet 2/2					