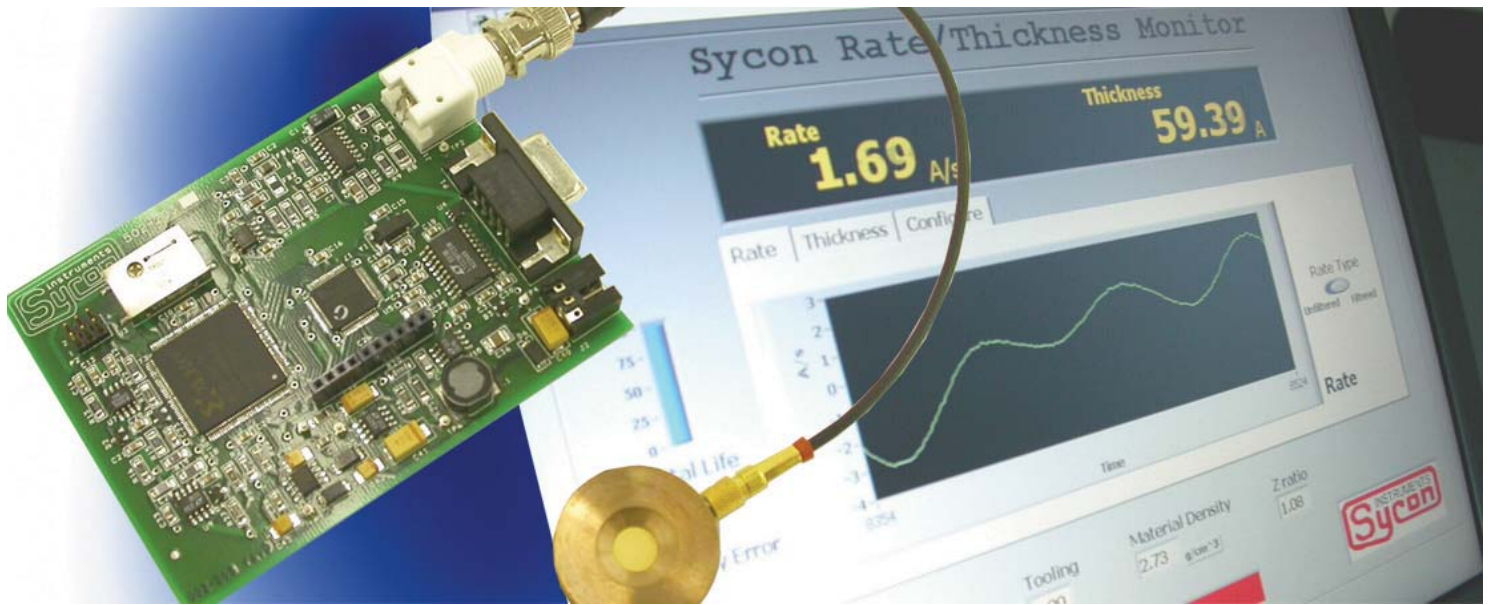


# STM-1

## SINGLE BOARD THIN FILM THICKNESS / RATE DEPOSITION MONITOR



Shown with required sensor and standard integrated oscillator

### SYCON STM-1

This compact single board Thin Film Thickness/Rate Deposition Monitor is the solution for many exacting thin film deposition applications - from the laboratory to the production floor. In the lab it can provide precise results and control for your thickness or mass deposition experiments. Using the RS232 communications, the LabVIEW™ software provided and your lab PC, it allows quick and simple results to be obtained for your film or mass measurement experiments. For the small or table top deposition system Manufacturer, it can be integrated into your existing system controller or by using its internal expansion bus it can support a custom OEM display/user interface to add accurate low cost thickness/rate monitoring to your small system. For larger systems, the RS485 interface provides multi-drop capability for up to 15 STM-1 monitors for large area monitoring or multi point averaging. The on board oscillator further reduces system cost when sensing head can be located 30" or less from the STM-1. If longer cable lengths are required the STM-1X can be used with Sycon's remote or In-Vacuum oscillator/sensor.

The STM-1 is the versatile solution to many thin film monitoring needs.

### FEATURES

- High Performance: 10 Measurements per second / 0.01 Å/s Rate display
- Single +5v Supply required optional wall power supply module available
- RS232 / RS485 interface for single or multi drop communications
- Built in on board Oscillator / optional remote or in-vacuum Oscillator sensor
- LabVIEW™ application included / LabView source code available
- Custom OEM readout / interface available for small or Table Top vacuum systems
- Optional mounting case available
- Optional USB interface available
- Small size 3" x 4" PCB
- Low cost



Distributed Throughout Europe by:

**LEWVAC**

Quality Components For Vacuum Technology

LewVac LLP, Unit F2, Ote Hall Farm

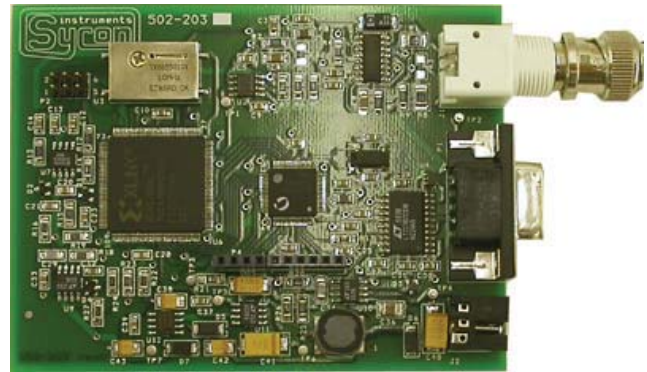
Janes Lane, Burgess Hill, RH15 0SR UK.

Tel: +44 (0)1444 233372, Fax: +44 (0)1444 233392

Email: sales@lewwac.co.uk, Website: www.lewwac.co.uk

# STM-1 Specification

Measurement	10/sec, .02Hz/measurement
Interface	RS232 / RS485
Connectors	Power Din, DB9-Comm, BNC-Sensor
Size	3"x 4" PCB
Weight	2 oz
Power Req	400ma, 5VDC

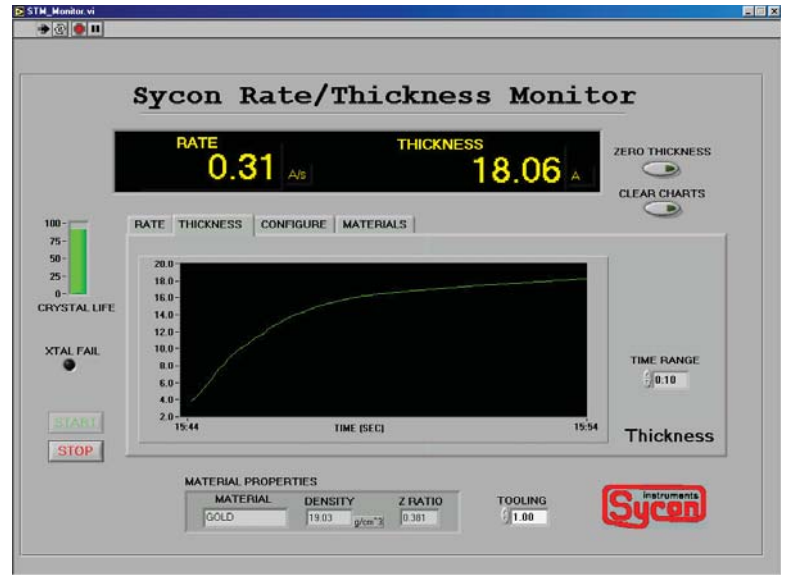


## Ordering Information

- 500-214 STM-1 with on-board oscillator
- 500-215 STM-1X for use with remote oscillator
- 500-216 Mounting Case
- 500-217 Wall plug power module
- 500-013 Remote Oscillator
- 500-218 In-Vacuum Oscillator/Sensor
- 500-023 10" in-vacuum cable
- 500-024 30" in-vacuum cable
- 500-025 6" bnc cable
- 500-219 LabVIEW™ Source Code\*

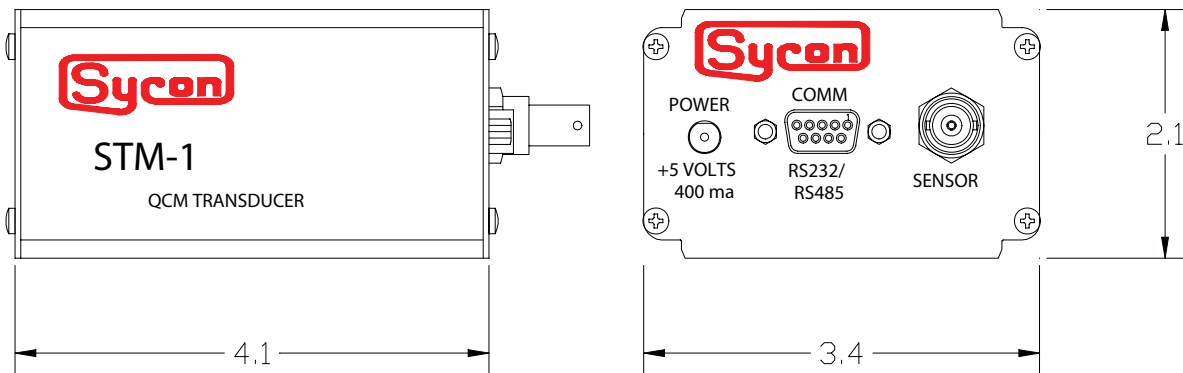
\*LabVIEW™ application included at no charge

Vacuum feedthroughs and sensing head per system requirements



LabVIEW™ Rate Display

## Optional Mounting Case



Distributed Throughout Europe by:

## LEWVAC

Quality Components For Vacuum Technology

LewVac LLP, Unit F2, Ote Hall Farm

Janes Lane, Burgess Hill, RH15 0SR UK.

Tel: +44 (0)1444 233372, Fax: +44 (0)1444 233392

Email: sales@lewwac.co.uk, Website: www.lewwac.co.uk